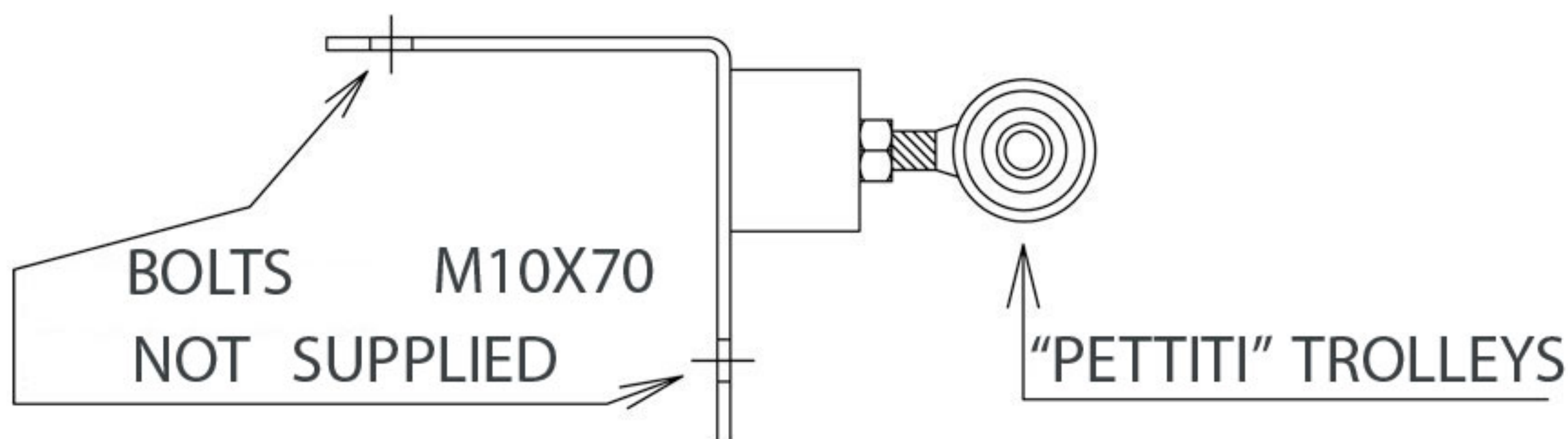
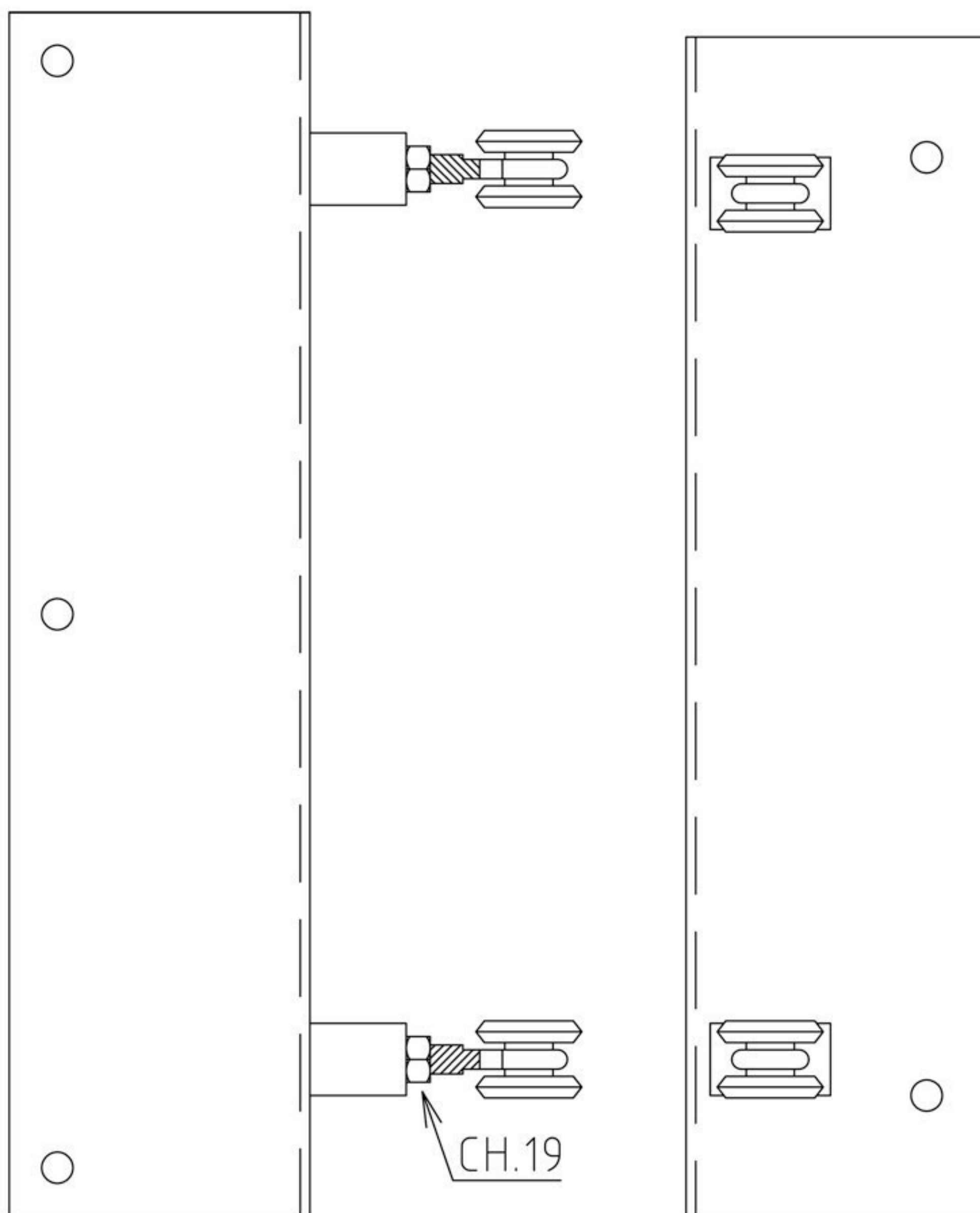




ASSEMBLY INSTRUCTIONS RIGID RAMP LADDER ON OUTER WALL SLAB

- 1) To fix the plate to yje slab of wall with nr. 05 hexagonal – headed bolts "M 10x70"(*) using a spanner "17" (*) not supplied



- 2) To screw the nr. 02 "petiti" trolleys to the plate and to block the screw nut using a spanner "19"
- 3) To fix the handrails to the ramp using screws M8x25 (supplied) together screw nuts 8 Blok (supplied) using a spanner "13"
- 4) To screw the nr. 02 wheels with brake to lower ramp side using a spanner "19" tightening the screw nut 12 to the metal frame
- 5) To insert the hexagonal-headed bolts "M10x55" (supplied) together screw nut 10 block (supplied) into the holes of the track. Like ending run