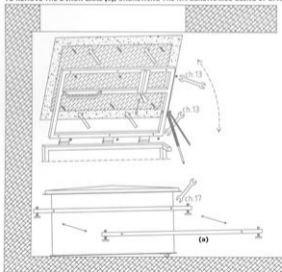
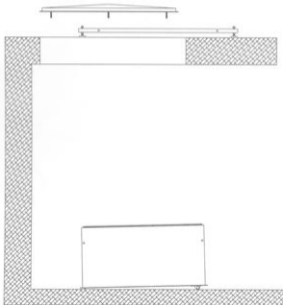


- 1) TO OPEN THE PACKAGING, PULL THE INTERNAL BOLT AND TO LIFT UP THE UPPER COVER.

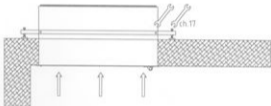
TO UNSCREW THE 3 + 3 SCREWS  $m=8$  WHICH CONNECT THE UPPER COVER WITH THE IRON FRAME, USING 13 SPANNER, AFTER TO REMOVE THE UPPER COVER, TO REMOVE THE 2 IRON BARS (a), UNSCREWING THE N.4 SCREWS  $m=10$  USING 17 SPANNER



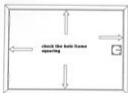
2) TO TAKE UP THE 2 IRON BARS (a) INCLUDING THE UPPER COVER



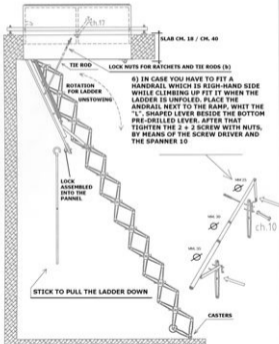
- 3) TO INSERT THE LADDER INTO THE HOLE FRAME STARTING FROM THE UNDER SIDE, THEN TO SCREW THE NR. 04 ADJUSTABLE CLAMBS TOWARDS THE SLAB.



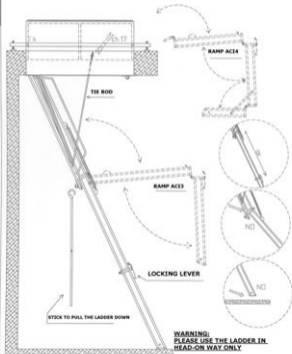
- 4) **WARNING:** CHECK THE HOLE FRAME SQUARING. ON THE CONTRARY PROVIDE TO ADJUST.



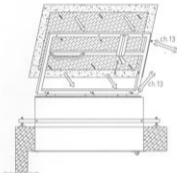
- 5) REGARDING ACI SVEZIA - ACI ALLUMINIO MODEL: OPEN THE LADDER EXTENDING THE SCISSOR. (OPERATING WITH FULL DOWN POLE). IN CASE IT NEEDS AN HEIGHT REGULATION SCREW / UNSCREW THE M10 NUTS (b) PLACED ON THE TIE-RODS USING 17 SPANNER



- 7) REGARDING ACI TIE - ACI QUATTRO MODEL OPEN THE LADDER EXTENDING THE FOLDING RAMP.  
(OPERATING WITH PULL DOWN POLE). IN CASE IT NEEDS AN HEIGHT REGULATION, SCREW /  
UNSCREW THE M10 NUTS (b) PLACED ON THE TIE-ROODS, USING 17 SPANNER.



- 8) TO REUNIT THE UPPER COVER TO FRAME USING THE 3 + 3 NB SCREWS.  
(USING IS SPANNER).



- 9) TO SEAL USING TAR-PAPER.

